

Key West Conch Quest 2009
May 11 – May 18, 2009

This is a Boat of the Year Event for: Sun Coast Boat of the Year, Sarasota Bay Boat of the Year, Charlotte Harbor Boat of the Year, and Southwest Florida Boat of the Year

Hosted by Clearwater Yacht Club, Naples Yacht Club, Gulf Coast Sailing Club, Punta Gorda Sailing Club Naples Sailing and Yacht Club, Platinum Point Yacht Club and Sarasota Yacht Club

SAILING INSTRUCTIONS

1 RULES

1.1 The regatta shall be governed by the 'rules' as defined in the Racing Rules of Sailing (RRS).

1.2 The organizing authority is Clearwater Yacht Club.

2. CHANGES TO RRS.

2.1 RRS A is modified to allow a time limit for late starts prior to being scored Did Not Start.

2.2 RRS 29.1 and 41 have been modified so that OCS vessels may be hailed and/or assessed a penalty if they do not restart properly.

2.3 RRS 41 is changed so that the race committee may make certain communications with competitors in regard to starting and finishing.

2.4 RRS 34 (US Sailing prescription) is modified to further define the finish line if the race committee is absent.

2.5 RRS 35 and RRS A are changed to allow a time limit in which all boats must finish.

2.6 RRS 44.3 is changed to allow a penalty of elapsed time rather than number of places.

2.7 RRS 61.3 is added to by requiring a protesting boat to notify the race committee by VHF of her intention to protest at the time she finishes.

2.8 RRS A 2 is changed so that no races are excluded.

3. ENTRIES

3.1 Eligible boats may be entered by completing the entry form and delivering it along with the required supporting documents prior to the applicable Skippers Meeting. Entries in the Key West to Naples race may also be made at the MANDATORY SKIPPER'S MEETING IN KEY WEST.

3.2 Classes are: WFPHRF Spinnaker, WFPHRF Non-Spinnaker, WFPHRF True Cruising, WFPHRF Racer/Cruiser and WFPHRF Multi Hull.

3.3 Minimum of three boats to make a class. If fewer than three entries are received in any class, those entries may be combined into another class.

3.4 A division of classes may be dictated by the number of entries received. Divisions will be assigned based on a combination of rating, displacement and sailing characteristics of each boat. An attempt will be made to follow boat of the year divisions if practicable.

4. NOTICE TO COMPETITORS AND SIGNALS MADE ASHORE

4.1 Applicable notices will be posted on the Official Notice Board at Clearwater Yacht Club, Sarasota Yacht Club, Platinum Point Yacht Club, Naples Sailing and Yacht Club or at the finish/starting line at the Galleon Marina and Beach Resort.

4.2 Any changes in the Sailing Instructions will be posted not less than two hours prior to the first start of each race, except that any change in the schedule of races shall be posted by 2000 on the day before it takes effect.

4.3 Signals made ashore will be displayed on the flag staffs at Clearwater Yacht Club, Platinum Point Yacht Club and Sarasota Yacht Club. In Key West, signals will be made at the finish/starting line at the Galleon Marina and Beach Resort.

4.4 The Sailing Instructions will be available at registration. They may be posted on the www as a courtesy only. The official Sailing Instructions are those made available at the respective registrations.

4.5 When flag AP is displayed ashore, '1 minute' is replaced with 'not less than 30 minutes'.

5 RACING AREA AND SCHEDULE

5.1 In Clearwater, May 13th, in the Gulf of Mexico, in the vicinity of Clearwater Pass "1". The first warning is at 0955.

5.2 In Sarasota, May 13th, in the Gulf of Mexico just West of Big Pass The first warning will be at 1255.

5.3 At Boca Grande, May 13th in the Gulf of Mexico in the vicinity of Boca Grande "2". The first warning is at 1655.

5.4 In Naples, May 13th, in the Gulf of Mexico, in the vicinity of Gordon Pass "1". The first warning will be at 1855.

5.5 In Key West, May 17th in Key West Bight in the vicinity of flashing red "24". The first warning is at 1125.

6 CLASS FLAGS

6.1 Class flags will be numeral pennants and will be delineated on the official scratch sheet.

7 THE COURSES

7.1 Clearwater: From the starting line North of Clearwater Pass (Clearwater Pass "1" is not a mark of the course), proceed southerly leaving John's Pass and Pass-a-Grille sea buoys to port. At Egmont Channel, pass West of FI G 6 sec "11" and R "12" FI R 6 sec Bells. Leave all other Florida West Coast sea buoys to port including Smith Shoal light FL 6 sec 47 ft. 9M; thence to Key West Northwest Channel sea buoy G "1" FL G 2.5 sec Bell leaving it to port; thence southeasterly along Northwest Channel passing between the East and West jetties, leaving green C "17" and green C "19" South of Tank Island to port, thence Northeasterly to the finish line near R "24" FL R 4 s in the Key West Bight Channel, leaving it to port. The rated course distance is 216 nautical miles.

7.2 The Sarasota to Key West Race shall begin just west of the mouth of Big Pass in the vicinity of 27 15.728 N, 82.34.663 W. Leave all coastal government marks including Smith Shoal Light to port thence to Key West Northwest Channel sea buoy "1" FI G 2.5 sec bell, leaving it to port, thence southeasterly along Northwest Channel passing between the East and West jetties, leaving green C "17" and green C "19" South of Tank Island to port, thence Northeasterly to the finish line near R "24" FL R 4 s in the Key West Bight Channel, leaving it to port. The rated course distance is 169 nautical miles.

7.3 Boca Grande: From the starting line, boats shall proceed Southwesterly to Key West Northwest Channel sea buoy G "1" FL G 2.5 sec Bell leaving it to port (Smith Shoal Light is not a mark of the course); thence southeasterly along Northwest Channel passing between the East and West jetties, leaving green C "17" and green C "19" South of Tank Island to port, thence Northeasterly to the finish line near R "24" FL R 4 s in the Key West Bight Channel, leaving it to port. The rated course distance is 132 nautical miles.

7.4 Naples: From the starting line, boats shall proceed Southwesterly leaving all coastal government marks to port (including Smith Shoal) to Key West Northwest Channel sea buoy G "1" FL G 2.5 sec Bell leaving it to port thence southeasterly along Northwest Channel passing between the East and West jetties, leaving green C "17" and green C "19" South of Tank Island to port, thence Northeasterly to the finish line near R "24" FL R 4 s in the Key West Bight Channel, leaving it to port. The rated course distance is 95.0 nautical miles.

7.5 Key West: Follow the reciprocal of the Naples course except Smith Shoal Light is not a mark of the course and the finish line shall be between the Naples Municipal Pier and a nearby orange mark. Gordon Pass Bell shall be left to starboard. Rated course distance equals 98.0 nautical miles.

8 CHECK IN

8.1 Prior to the first warning signal in Clearwater, Sarasota, Boca Grande and Naples, each boat shall check in by sailing past the stern of the race committee signal boat on starboard tack, and hail her sail number and class which will be acknowledged by the race committee. In Key West, check in will be on VHF channel 72.

8.2 It is the responsibility of each boat to make certain she has been identified.

8.3 Monohull boats shall display the class streamer from their backstay at all times while racing. Multi Hulls shall display the streamer from the starboard shroud.

9. Communication

9.1 Boats are urged to monitor VHF channel 72 as the race committee may attempt to give competitors advance warning of upcoming starting sequences, schedules, and OCS boats. This changes RRS41.

9.2. The failure of the race committee to make, or the failure of any boat to hear transmissions shall not be grounds for granting redress. This changes RRS 62.1.

10. THE START

10.1 Class flags will be numeral pennants and will be listed on the scratch sheet except in Boca Grande where the class flag will be a purple flag.

10.2 The starting lines in Clearwater and Sarasota will be between a staff displaying an orange flag on the signal boat at the starboard end and an orange mark at the port end; in Boca Grande, between a staff displaying an orange flag on the signal boat at the starboard end and Boca Grande red # 2 on the port end. The Naples start will be between a staff displaying an orange flag on the signal boat at the starboard end and Gordon's Pass G1 Buoy on the Port end. In Key West, the starting line will be between a staff displaying an orange flag on the dock of the Galleon Resort and Marina on the port end and R "24" FL R 4 s on the starboard end.

10.3 The starting area is defined as an area extending one half the length of the starting line behind it, in front of it, and at both ends. Boats whose warning signal has not been made shall keep clear of the starting area.

10.4 A boat not starting within ten minutes of the start of her class shall be scored Did Not Start unless she reports her intention to start to the race committee signal boat on VHF channel 72. The race committee may give her permission to start. The race committee shall remain on station for ten minutes after the last class starts. This changes RRS A 4.2.

10.5 A boat that is on the course side of the starting line at her starting signal and who fails to start properly shall have thirty (30) minutes added to her elapsed finish time providing she is less than ten (10) minutes premature. If ten (10) or more minutes premature she shall be scored "DNS". This changes RRS 29.1.

11 THE FINISH

11.1 ALL BOATS SHALL CONTACT THE RACE COMMITTEE ON VHF CHANNEL 72 WHEN ABEAM OF TANK ISLAND IN KEY WEST. BOATS FINISHING IN NAPLES SHALL CONTACT THE RACE COMMITTEE BY CELL PHONE, IF AVAILABLE, AT (239) 592-3358 OR ALTERNATIVELY ON VHF CHANNEL 72 WHEN APPROXIMATELY ONE HOUR SOUTH OF THE NAPLES MUNICIPAL PIER. EACH BOAT SHALL IDENTIFY HERSELF AND HER INTENTION TO FINISH. FAILURE TO DO SO MAY RESULT IN A SCORE OF DID NOT FINISH.

11.2 The finish line in Key West will be between R "24" FL R 4s to port, and a staff displaying an orange flag on the dock of the Galleon Resort and Marina to starboard.

11.3 The finish line in Naples will be between a staff displaying an orange flag located on the Municipal Pier North of Gordon Pass on the starboard end and a floating orange mark to port. A boat finishing in Naples between 1700 and 1900 shall contact the race committee by phone at (239) 592-3358 immediately after finishing and report her finish time.

11.4 EACH BOAT SHALL ENSURE THAT SHE IS PROPERLY IDENTIFIED WHEN FINISHING. AT NIGHT OR IN INCLEMENT WEATHER, EACH BOAT SHALL ILLUMINATE HER SAIL NUMBER. IF RADIO CONTACT IS NOT ACKNOWLEDGED SHE SHALL COME WITHIN HAILING DISTANCE OF THE RACE COMMITTEE TO CONFIRM HER IDENTIFICATION UNTIL THE BOAT MAKES CERTAIN SHE HAS BEEN IDENTIFIED.

11.5 In the absence of the race committee, a boat shall take her own time upon finishing and shall record the sail number of the boat immediately ahead and astern. The boat shall report her finishing time and other information to the race committee as soon as possible. A boat taking her own time in Key West shall pass within 50 yards of the finish mark, R "24" FL R 4 s and record her time when the mark bears 280 degrees to port from the bow of the vessel.

In Naples, finishing boats shall pass no less than fifty yards nor more than one-hundred yards from the end of the Naples Municipal Pier and record their time when sighting directly down the center line of the pier to the East. This changes US Sailing prescription to RRS 34.

12 PENALTY SYSTEM

12.1 A boat that takes a scoring penalty shall be assessed a penalty of two (2) hours added to her elapsed time. This changes RRS 44.3 (c) and RRS A .

13 TIME LIMITS

13.1 From Naples to Key West, boats still racing after 0600 on Saturday May 19th shall be scored DNF; Sarasota, 1800 on Saturday, May 16th, Boca Grande, 1800 on Saturday, May 16th, Clearwater, 1800 on Saturday, May 16th, and Key West to Naples, 1900 on Monday, May 22nd. This modifies RRS 35 and A 4.1.

14 PROTESTS AND REQUESTS FOR REDRESS

14.1 A boat intending to protest shall, upon finishing, report to the race committee on VHF channel 72, clearly identifying the infringing boat and await acknowledgment. This adds to RRS 61.3.

14.2 Protest forms will be available in Key West at the finish line. In Naples, forms are available at Naples Yacht Club. Protests shall be delivered to a member of the race committee one hour after the time limit for boats to finish in their respective races - in Key West, at the office in the Cypress House, 601 Caroline Street, and in Naples, at the business office of the Naples Yacht Club.

14.3 Notices will be posted within thirty minutes of the protest time limit to inform competitors of hearings in which they are parties or named as witnesses. As soon thereafter as practicable, hearings in Key West will be held at the Galleon Resort and Marina and in Naples, at the Naples Yacht Club.

15 SCORING

15.1 Corrected times will be calculated using time on distance based on the boat's WFPHRF "OWC" rating.

16. SAFETY REGULATIONS

16.1 BOATS WITHDRAWING FROM THE RACE TO KEY WEST SHALL CALL THE RACE COMMITTEE ON VHF CHANNEL 72. IF A VESSEL CAN NOT MAKE VHF RADIO CONTACT, SHE SHALL NOTIFY DAVID BILLING, PRO AT THE CYPRESS HOUSE (305) 294-6969, OR CELL # (727) 560-1752 OR THE CLEARWATER YACHT CLUB (727) 447-6000 AS SOON AS PRACTICABLE. BOATS RACING TO NAPLES SHALL CALL LODGE McKEE AT (239) 592-3358.

17 SPECIAL RULES

17.1 Clearwater Yacht Club, Naples Yacht Club, Naples Sailing and Yacht Club, Gulf Coast Sailing Club, Punta Gorda Sailing Club, Naples Sailing and Yacht Club, Platinum Point Yacht Club Sarasota Yacht Club and all participating commercial facilities do not accept responsibility for loss of life or injury to participants or others or for the loss of or damage to any vessel in any way or from any cause during or related to this race. It shall be the sole and exclusive responsibility of the skipper to decide whether or not to start or continue in the race.

17.2 The safety of the boat and her crew is the sole and inescapable responsibility of the skipper who shall insure that the boat is fully found, thoroughly seaworthy and manned by an experienced crew. The skipper of the boat shall be satisfied as to the soundness of the hull, spars, rigging, sails and gear; shall insure that all equipment is properly maintained and stowed and that Skipper and crew know where it is kept and how to use it. The skipper shall make certain that his boat meets the current requirements of WFPHRF, and the U.S. Coast Guard and shall comply with the International Regulations for Preventing Collisions at Sea when applicable.

17.3 True Cruising Class and Racer/Cruiser Class entries intending to use spinnakers or cruising spinnakers per WFPHRF Class Rules shall notify the race committee in writing prior to the applicable skippers meeting.

17.4 Competitors compete in this regatta entirely at their own risk. See RRS 4, Decision to Race. The organizing authority, host clubs, sponsors, their associates and appointees will not accept any liability for material damage or personal injury or death sustained in conjunction with or prior to, during or after the regatta."

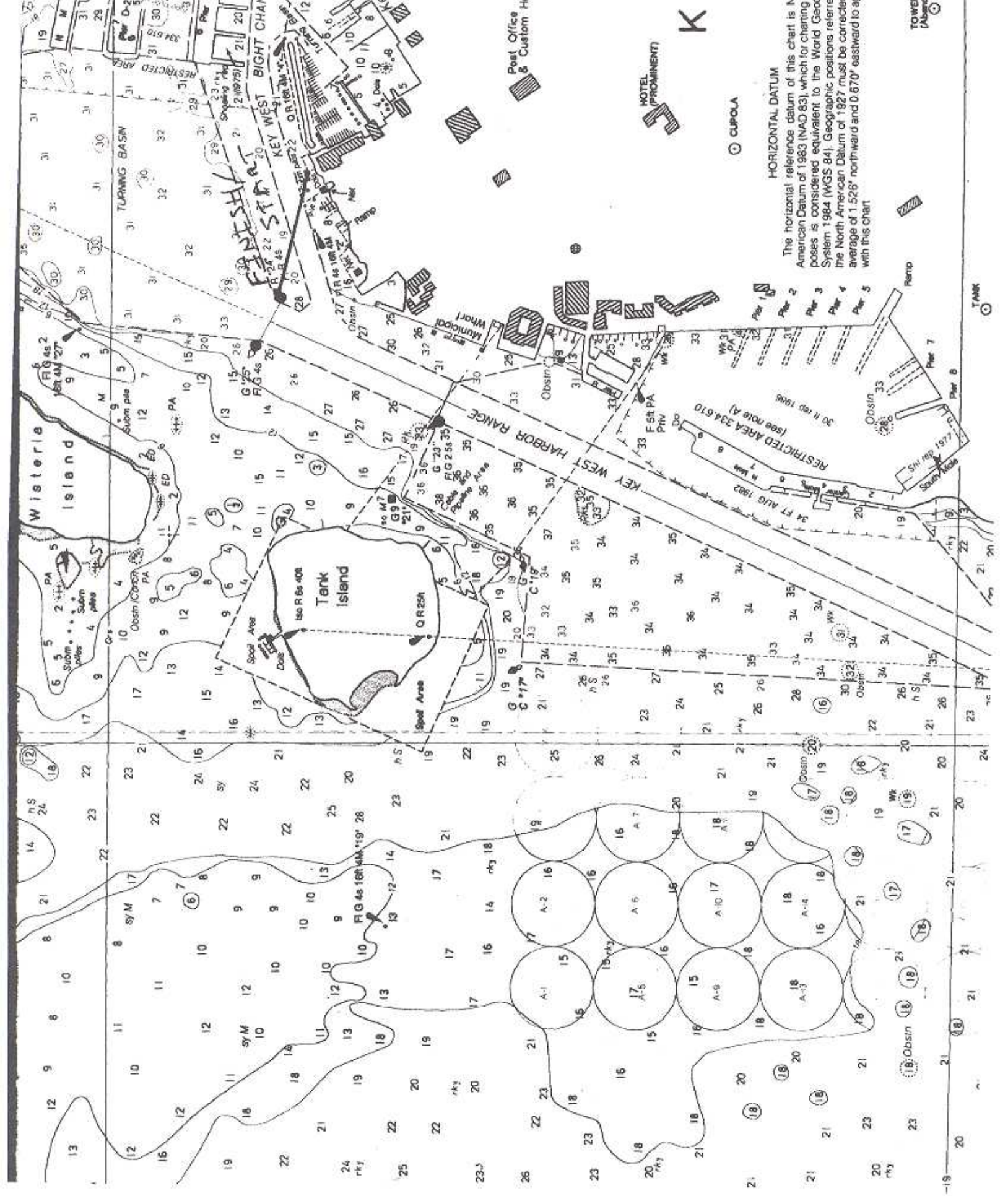
18 Prizes

18.1 Trophies will be awarded based on the number of entries in each division as follows: three entries, one trophy; four entries, two trophies; five or more entries, three trophies.

Specialty prizes may also be given.

19. SPECIAL INSTRUCTIONS

19.1 Clearwater Yacht Club has limited parking facilities. Non-members are reminded that parking is reserved for members only.



HORIZONTAL DATUM
 The horizontal reference datum of this chart is the North American Datum of 1927, which for charting purposes is considered equivalent to the World Geodetic System 1984 (WGS 84). Geographic positions relative to the North American Datum of 1927 must be corrected by an average of 1.526" northward and 0.670" eastward to agree with this chart.